



Installation of censhare Plugins

Guide

Version 15.0

April 7th, 2020

Hint: If you update InDesign / InCopy to a new version, this must be supported by your censhare server

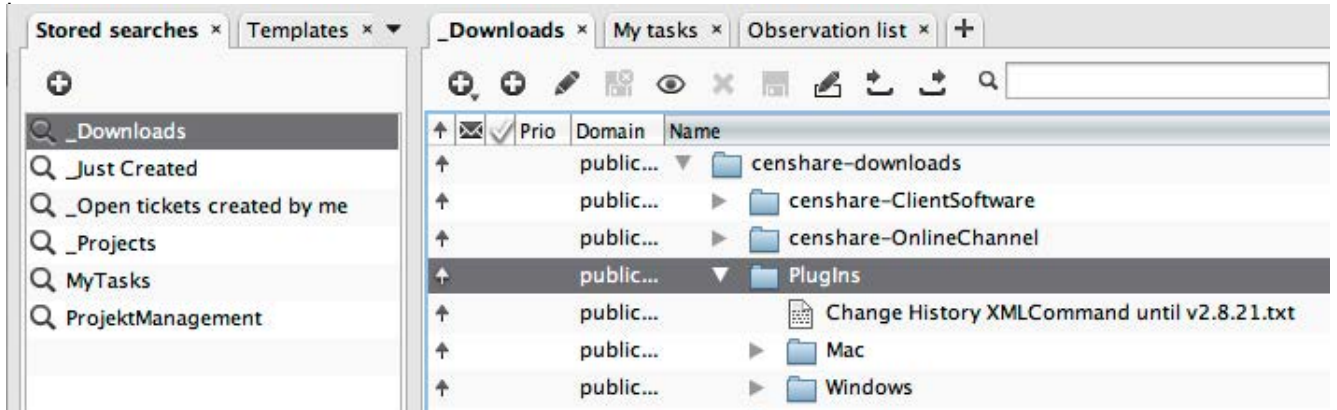
TABLE OF CONTENT:

- Macintosh OS - How to install a plugin
 - Installation of Adobe InDesign, InCopy or InDesignServer Plug-Ins
 - Where to install the plugin
 - Version specific information of Plug-In installation
 - 2020
 - CC-2019
 - CC-2018
 - CC-2017 (Mac OS InCopy Plug-In installation is different to previous Adobe releases)
 - CC-2015
 - CC-2014
 - CC
 - CS 6
 - CS 5.5
 - CS 5
 - CS 4
 - CS 3
 - CS 2
 - CS
- Windows - How to install a plugin
 - Installation of Adobe InDesign, InCopy or InDesignServer Plug-Ins
 - Where to install the plugin
 - Version specific information of Plug-In installation
 - 2020
 - CC-2019
 - CC-2018
 - CC-2017
 - CC-2015 (Windows InCopy Plug-In installation is different to previous Adobe releases)
 - CC-2014
 - CC
 - CS 6
 - CS 5.5
 - CS 5
 - CS 4
 - CS 3
 - CS 2
 - CS

Macintosh OS - How to install a plugin

Installation of Adobe InDesign, InCopy or InDesignServer Plug-Ins

You can download your needed plugin within the censhare ecosphere Tracker by using the stored search '_Downloads'. Find the needed plugins within the folder 'censhare-downloads/PlugIns/

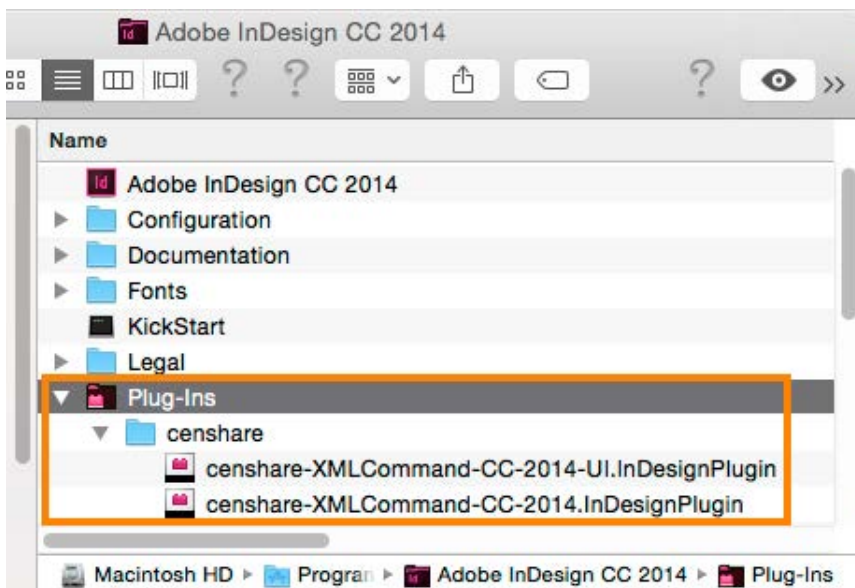


Please take care to select your correct system (Mac/Windows) and the corresponding version for your InDesign/InCopy or InDesignServer version. Below the operating system folders (Mac/Windows) you will find folders for your InDesignServer and InDesign versions. The InDesign plug-ins are also used for InCopy. So if you need InCopy plug-ins, take them from the InDesign folder (difference between InDesign/InCopy and InDesignServer plug-ins - only InDesign/InCopy use the UI part).

Where to install the plugin

1. Open the InDesign, InCopy or InDesignServer application folder.
e.g. '/Applications/Adobe InDesign CC 2019/Plug-Ins/'
Hint: Since CC2017 all Adobe native plugins moved from the described Plug-Ins folder into the CC2017 application package, so you will no longer find Adobe native plugins in this folder.
2. Create a new folder named 'censhare'.
3. Copy the plugin into the folder 'censhare'.

Installation example with InDesign CC 2014:



Version specific information of Plug-In installation

2020 (Only versions 2.9.x now are notarized to be able to work on OS X 10.15 Catalina)

- Adobe InDesign:
 - Install:
 - "censhare/censhare-XMLCommand-2020.InDesignPlugin"
 - "censhare/censhare-XMLCommand-2020-UI.InDesignPlugin"

- Adobe InDesign Server:
 - Install:
 - "censhare/censhare-XMLCommand-2020.InDesignPlugin"

- Adobe InCopy:
 - Disable only for censhare versions smaller 5.8.5:
 - "InCopyWorkflow/Assignment UI.InDesignPlugin"Details for deactivation find in CC-2017 description on next page
 - Install:
 - "censhare/censhare-XMLCommand-2020.InDesignPlugin"
 - "censhare/censhare-XMLCommand-2020-UI.InDesignPlugin"

HINT

Only plug-In version 2.9.x offers InDesign(Server) 2020 and InCopy 2020 support.

2.8.x versions will be discontinued on OS X for InDesign(Server) 2020 and InCopy 2020.

CC-2019 (Only versions 2.9.x now are notarized to be able to work on OS X 10.15 Catalina)

- Adobe InDesign:
 - Install:
 - "censhare/censhare-XMLCommand-CC-2019.InDesignPlugin"
 - "censhare/censhare-XMLCommand-CC-2019-UI.InDesignPlugin"

- Adobe InDesign Server:
 - Install:
 - "censhare/censhare-XMLCommand-CC-2019.InDesignPlugin"

- Adobe InCopy:
 - Disable only for censhare versions smaller 5.8.5:
 - "InCopyWorkflow/Assignment UI.InDesignPlugin"Details for deactivation find in CC-2017 description on next page
 - Install:
 - "censhare/censhare-XMLCommand-CC-2019.InDesignPlugin"
 - "censhare/censhare-XMLCommand-CC-2019-UI.InDesignPlugin"

CC-2018

- Adobe InDesign:
 - Install:
 - "censhare/censhare-XMLCommand-CC-2018.InDesignPlugin"
 - "censhare/censhare-XMLCommand-CC-2018-UI.InDesignPlugin"

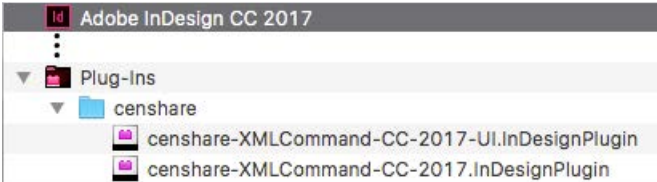
- Adobe InDesign Server:
 - Install:
 - "censhare/censhare-XMLCommand-CC-2018.InDesignPlugin"

- Adobe InCopy:
 - Disable only for censhare versions smaller 5.8.5, 5.7.6, 5.6.10, 5.5.11:
 - "InCopyWorkflow/Assignment UI.InDesignPlugin"Details for deactivation find in CC-2017 description on next page
 - Install:
 - "censhare/censhare-XMLCommand-CC-2018.InDesignPlugin"
 - "censhare/censhare-XMLCommand-CC-2018-UI.InDesignPlugin"

CC-2017 (Only versions 2.9.x now are notarized to be able to work on OS X 10.15 Catalina)

- Adobe InDesign:
 - Install:
 - "censhare/censhare-XMLCommand-CC-2017.InDesignPlugin"
 - "censhare/censhare-XMLCommand-CC-2017-UI.InDesignPlugin"

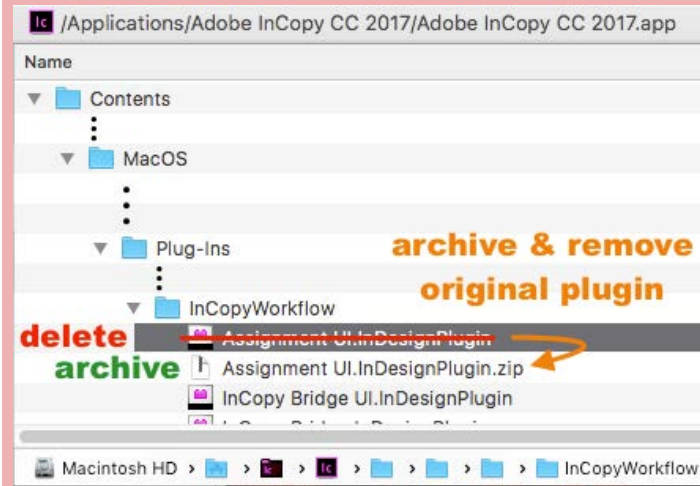
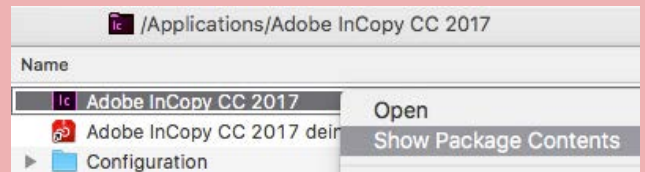
CC 2017 installation example:



- Adobe InDesign Server:
 - Install:
 - "censhare/censhare-XMLCommand-CC-2017.InDesignPlugin"

- Adobe InCopy:
 - Disable only for censhare versions smaller 5.8.5, 5.7.6, 5.6.10, 5.5.11, 5.4.9, 5.3.12, 5.2.12, 5.1.17:

- "InCopyWorkflow/Assignment UI.InDesignPlugin"
- currently there is no automatic deactivation of this plugin by the censhareClients, as Adobe has changed the file path.



To disable the 'Assignment UI.InDesignPlugin' select InDesign as shown above, click right mouse button and click 'Show Package Contents'. Now as shown left hand navigate to: .../Contents/MacOS/Plug-Ins/InCopyWorkflow (The folder InCopyWorkflow might also be named ICWF)

Now archive 'Assignment UI.InDesignPlugin' for possible later use by e.g. zipping it. After you generated the zip file you must delete the 'Assignment UI.InDesignPlugin' to enable the correct installation of the censhare plugin. Next install the censhare plugin as usual to the Plug-Ins folder beside the InCopy application.

- Install:
 - "/Applications/Adobe InCopy CC 2017/Plug-Ins/censhare/censhare-XMLCommand-CC-2017.InDesignPlugin"
 - "/Applications/Adobe InCopy CC 2017/Plug-Ins/censhare/censhare-XMLCommand-CC-2017-UI.InDesignPlugin"

Hint: on update of InCopy the Assignment UI Plugin must be in it's original location or the update may fail.

CC-2015

- Adobe InDesign:
 - Install:
 - "censhare/censhare-XMLCommand-CC-2015.InDesignPlugin"
 - "censhare/censhare-XMLCommand-CC-2015-UI.InDesignPlugin"

- Adobe InDesign Server:
 - Install:
 - "censhare/censhare-XMLCommand-CC-2015.InDesignPlugin"

- Adobe InCopy:
 - Disable only for censhare versions smaller
5.8.5, 5.7.6, 5.6.10, 5.5.11, 5.4.9, 5.3.12, 5.2.12, 5.1.17:
 - "InCopyWorkflow/Assignment UI.InDesignPlugin"
 - Install:
 - "censhare/censhare-XMLCommand-CC-2015.InDesignPlugin"
 - "censhare/censhare-XMLCommand-CC-2015-UI.InDesignPlugin"

CC-2014

- Adobe InDesign:
 - Install:
 - "censhare/censhare-XMLCommand-CC-2014.InDesignPlugin"
 - "censhare/censhare-XMLCommand-CC-2014-UI.InDesignPlugin"

- Adobe InDesign Server:
 - Install:
 - "censhare/censhare-XMLCommand-CC-2014.InDesignPlugin"

- Adobe InCopy:
 - Disable only for censhare versions smaller
5.8.5, 5.7.6, 5.6.10, 5.5.11, 5.4.9, 5.3.12, 5.2.12, 5.1.17, 4.10.24, 4.9.20, 4.8.27:
 - "InCopyWorkflow/Assignment UI.InDesignPlugin"
 - Install:
 - "censhare/censhare-XMLCommand-CC-2014.InDesignPlugin"
 - "censhare/censhare-XMLCommand-CC-2014-UI.InDesignPlugin"

CC

- Adobe InDesign:
 - Install:
 - "censhare/censhare-XMLCommand-CC.InDesignPlugin"
 - "censhare/censhare-XMLCommand-CC-UI.InDesignPlugin"

- Adobe InDesign Server:
 - Install:
 - "censhare/censhare-XMLCommand-CC.InDesignPlugin"

- Adobe InCopy:
 - Disable only for censhare versions smaller
5.8.5, 5.7.6, 5.6.10, 5.5.11, 5.4.9, 5.3.12, 5.2.12, 5.1.17, 4.10.24, 4.9.20, 4.8.27 and lower:
 - "InCopyWorkflow/Assignment UI.InDesignPlugin"
- Install:
 - "censhare/censhare-XMLCommand-CC.InDesignPlugin"
 - "censhare/censhare-XMLCommand-CC-UI.InDesignPlugin"

CS-6

- Adobe InDesign:
 - Install:
 - "censhare/censhare-XMLCommand-CS6.InDesignPlugin"
 - "censhare/censhare-XMLCommand-CS6-UI.InDesignPlugin"

- Adobe InDesign Server:
 - Install:
 - "censhare/censhare-XMLCommand-CS6.InDesignPlugin"

- Adobe InCopy:
 - Disable only for censhare versions smaller
5.8.5, 5.7.6, 5.6.10, 5.5.11, 5.4.9, 5.3.12, 5.2.12, 5.1.17, 4.10.24, 4.9.20, 4.8.27 and lower:
 - "InCopyWorkflow/Assignment UI.InDesignPlugin"
- Install:
 - "censhare/censhare-XMLCommand-CS6.InDesignPlugin"
 - "censhare/censhare-XMLCommand-CS6-UI.InDesignPlugin"

CS-5.5

- Adobe InDesign:
 - Install:
 - "censhare/censhare-XMLCommand-CS5.5.InDesignPlugin"
 - "censhare/censhare-XMLCommand-CS5.5-UI.InDesignPlugin"

- Adobe InDesign Server:
 - Install:
 - "censhare/censhare-XMLCommand-CS5.5.InDesignPlugin"

- Adobe InCopy:
 - Disable only for censhare versions smaller
5.8.5, 5.7.6, 5.6.10, 5.5.11, 5.4.9, 5.3.12, 5.2.12, 5.1.17, 4.10.24, 4.9.20, 4.8.27 and lower:
 - "InCopyWorkflow/Assignment UI.InDesignPlugin"
 - Install:
 - "censhare/censhare-XMLCommand-CS5.5.InDesignPlugin"
 - "censhare/censhare-XMLCommand-CS5.5-UI.InDesignPlugin"

CS-5

- Adobe InDesign:
 - Install:
 - "censhare/censhare-XMLCommand-CS5.InDesignPlugin"
 - "censhare/censhare-XMLCommand-CS5-UI.InDesignPlugin"

- Adobe InDesign Server:
 - Install:
 - "censhare/censhare-XMLCommand-CS5.InDesignPlugin"

- Adobe InCopy:
 - Disable only for censhare versions smaller
5.8.5, 5.7.6, 5.6.10, 5.5.11, 5.4.9, 5.3.12, 5.2.12, 5.1.17, 4.10.24, 4.9.20, 4.8.27 and lower:
 - "InCopyWorkflow/Assignment UI.InDesignPlugin"
 - Install:
 - "censhare/censhare-XMLCommand-CS5.InDesignPlugin"
 - "censhare/censhare-XMLCommand-CS5-UI.InDesignPlugin"

CS-4

- Adobe InDesign:
 - Install:
 - "censhare/censhare-XMLCommand-CS4.InDesignPlugin"
- Adobe InDesign Server:
 - Install:
 - "censhare/censhare-XMLCommand-Server-CS4.InDesignPlugin"
- Adobe InCopy:
 - Disable:
 - "InCopyWorkflow/Assignment UI.InDesignPlugin"
 - (Will be requested to be deactivated by censhareClients since v4)
 - Install:
 - "censhare/censhare-XMLCommand-CS4.InDesignPlugin"

CS-3

- Adobe InDesign:
 - Install:
 - "censhare/censhare-XMLCommand-CS3.InDesignPlugin"
- Adobe InDesign Server:
 - Install:
 - "censhare/censhare-XMLCommand-Server-CS3.InDesignPlugin"
- Adobe InCopy:
 - Disable:
 - "InCopyWorkflow/InCopy Bridge.InDesignPlugin"
 - "InCopyWorkflow/InCopy Bridge UI.InDesignPlugin"
 - "InCopyWorkflow/Assignment UI.InDesignPlugin"
 - Install:
 - "censhare/censhare-XMLCommand-CS3.InDesignPlugin"

CS-2

- Adobe InDesign:
 - Install:
 - "censhare/XMLCommand-CenShare.framework"

- Adobe InDesign Server:
 - Install:
 - "censhare/censhare-XMLCommand-Server-CS2.framework"

- Adobe InCopy:
 - Disable:
 - "InCopyWorkflow/InCopy Bridge.framework"
 - "InCopyWorkflow/InCopy Bridge UI.framework"
 - "InCopyWorkflow/Assignment UI.framework"
 - Install:
 - "censhare/censhare-XMLCommand-CS2.framework"

CS

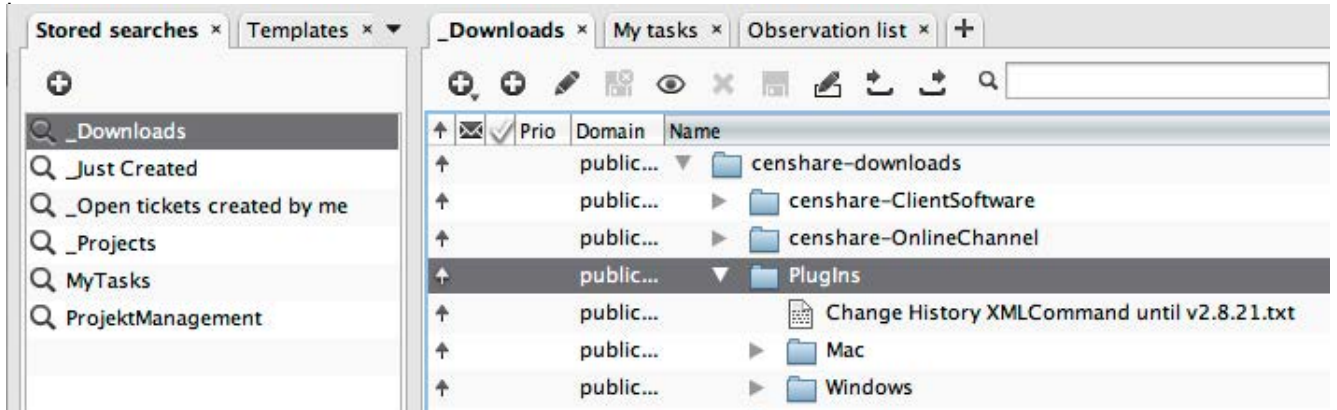
- Adobe InDesign
 - Disable:
 - 'InCopyWorkflow/InCopy Bridge'
 - 'InCopyWorkflow/InCopy Bridge UI'
 - 'InCopyWorkflow/InCopyExport'
 - Install:
 - 'censhare/XMLCommand-CenShare'
 - 'censhare/InCopyExport-CenShare'

- Adobe InCopy:
 - Disable:
 - 'InCopyWorkflow/InCopy Bridge'
 - 'InCopyWorkflow/InCopy Bridge UI'
 - 'Text/Story List Panel'
 - 'UI/InCopyFileActions'
 - Install:
 - 'censhare/censhare-XMLCommand-CS2.framework'
 - 'censhare/InCopyFileActions-CenShare'

Windows - How to install a plugin

Installation of Adobe InDesign, InCopy or InDesignServer Plug-Ins

You can download your needed plugin within the censhare ecosphere Tracker by using the stored search '_Downloads'. Find the needed plugins within the folder 'censhare-downloads/PlugIns/

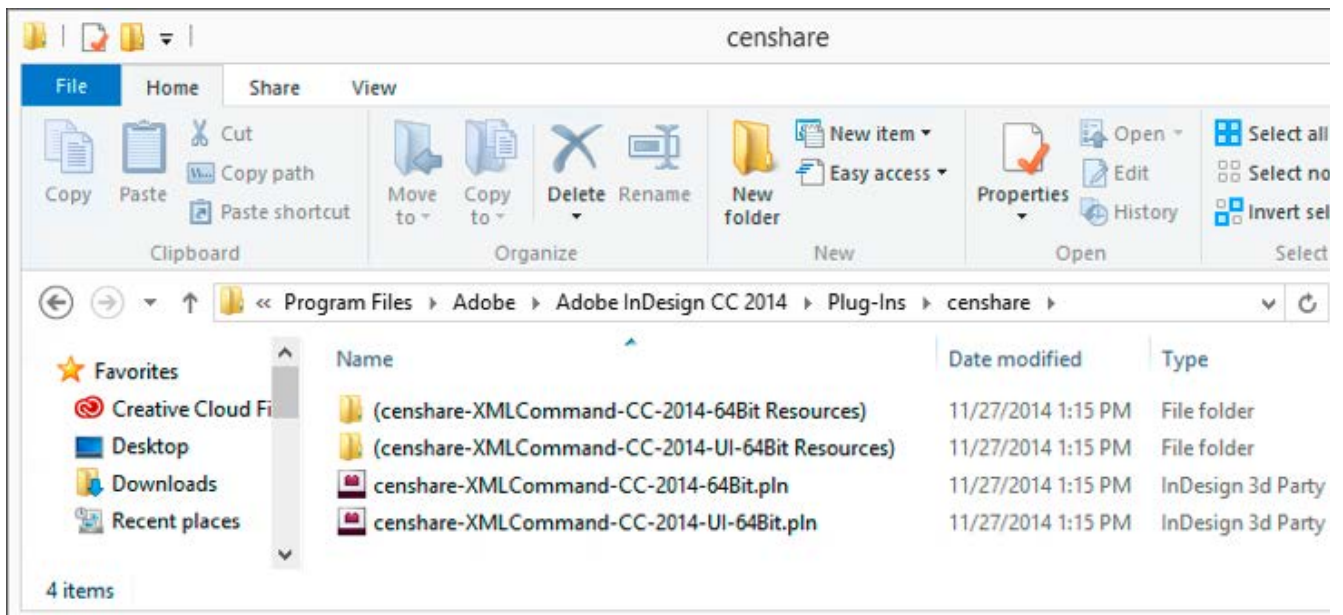


Please take care to select your correct system (Mac/Windows) and the corresponding version for your InDesign/InCopy or InDesignServer version. Below the operating system folders (Mac/Windows) you will find folders for your InDesignServer and InDesign versions. The InDesign plug-ins are also used for InCopy. So if you need InCopy plug-ins, take them from the InDesign folder (difference between InDesign/InCopy and InDesignServer plug-ins - only InDesign/InCopy use the UI part).

Where to install the plugin

1. Open the InDesign, InCopy or InDesignServer application folder.
e.g. 'C:\Program Files\Adobe\Adobe InDesign CC 2019\Plug-Ins'
2. Create a new folder named 'censhare'.
3. Copy the plugin into the folder 'censhare'.

Installation example with InDesign CC 2014:



Version specific information of plug-in installation

2020 (Starting with 2020 no 32-bit versions of the plug-in are available any more)

- Adobe InDesign:
 - Install:
 - "censhare/censhare-XMLCommand-2020-64Bit.pln"
 - "censhare/(censhare-XMLCommand-2020-64Bit Resources)/**"
 - "censhare/censhare-XMLCommand-2020-UI-64Bit.pln"
 - "censhare/(censhare-XMLCommand-2020-UI-64Bit Resources)/**"
- Adobe InDesign Server:
 - Install:
 - "censhare/censhare-XMLCommand-2020-64Bit.pln"
 - "censhare/(censhare-XMLCommand-2020-64Bit Resources)/**"
- Adobe InCopy:
 - Disable only for censhare versions smaller 5.8.5:
 - "ICWF/Assignment UI.apln" (which was "InCopyWorkflow/Assignment UI.apln" in earlier Adobe releases)
 - Install:
 - "censhare/censhare-XMLCommand-2020-64Bit.pln"
 - "censhare/(censhare-XMLCommand-2020-64Bit Resources)/**"
 - "censhare/censhare-XMLCommand-2020-UI-64Bit.pln"
 - "censhare/(censhare-XMLCommand-2020-UI-64Bit Resources)/**"

CC-2019 (32 Bit)

- Adobe InDesign:
 - Install:
 - "censhare/censhare-XMLCommand-CC-2019.pln"
 - "censhare/(censhare-XMLCommand-CC-2019 Resources)/**"
 - "censhare/censhare-XMLCommand-CC-2019-UI.pln"
 - "censhare/(censhare-XMLCommand-CC-2019-UI Resources)/**"
- Adobe InDesign Server:
 - Install:
 - "censhare/censhare-XMLCommand-CC-2019.pln"
 - "censhare/(censhare-XMLCommand-CC-2019 Resources)/**"
- Adobe InCopy:
 - Disable only for censhare versions smaller 5.8.5:
 - "ICWF/Assignment UI.apln" (which was "InCopyWorkflow/Assignment UI.apln" in earlier Adobe releases)
 - Install:
 - "censhare/censhare-XMLCommand-CC-2019.pln"
 - "censhare/(censhare-XMLCommand-CC-2019 Resources)/**"
 - "censhare/censhare-XMLCommand-CC-2019-UI.pln"
 - "censhare/(censhare-XMLCommand-CC-2019-UI Resources)/**"

CC-2019 (64 Bit)

- Adobe InDesign:
 - Install:
 - "censhare/censhare-XMLCommand-CC-2019-64Bit.pln"
 - "censhare/(censhare-XMLCommand-CC-2019-64Bit Resources)/**"
 - "censhare/censhare-XMLCommand-CC-2019-UI-64Bit.pln"
 - "censhare/(censhare-XMLCommand-CC-2019-UI-64Bit Resources)/**"
- Adobe InDesign Server:
 - Install:
 - "censhare/censhare-XMLCommand-CC-2019-64Bit.pln"
 - "censhare/(censhare-XMLCommand-CC-2019-64Bit Resources)/**"
- Adobe InCopy:
 - Disable only for censhare versions smaller 5.8.5:
 - "ICWF/Assignment UI.apln" (which was "InCopyWorkflow/Assignment UI.apln" in earlier Adobe releases)
 - Install:
 - "censhare/censhare-XMLCommand-CC-2019-64Bit.pln"
 - "censhare/(censhare-XMLCommand-CC-2019-64Bit Resources)/**"
 - "censhare/censhare-XMLCommand-CC-2019-UI-64Bit.pln"
 - "censhare/(censhare-XMLCommand-CC-2019-UI-64Bit Resources)/**"

CC-2018 (32 Bit)

- Adobe InDesign:
 - Install:
 - "censhare/censhare-XMLCommand-CC-2018.pln"
 - "censhare/(censhare-XMLCommand-CC-2018 Resources)/**"
 - "censhare/censhare-XMLCommand-CC-2018-UI.pln"
 - "censhare/(censhare-XMLCommand-CC-2018-UI Resources)/**"
- Adobe InDesign Server:
 - Install:
 - "censhare/censhare-XMLCommand-CC-2018.pln"
 - "censhare/(censhare-XMLCommand-CC-2018 Resources)/**"
- Adobe InCopy:
 - Disable only for censhare versions smaller 5.8.5, 5.7.6, 5.6.10, 5.5.11:
 - "ICWF/Assignment UI.apln" (which was "InCopyWorkflow/Assignment UI.apln" in earlier Adobe releases)
 - Install:
 - "censhare/censhare-XMLCommand-CC-2018.pln"
 - "censhare/(censhare-XMLCommand-CC-2018 Resources)/**"
 - "censhare/censhare-XMLCommand-CC-2018-UI.pln"
 - "censhare/(censhare-XMLCommand-CC-2018-UI Resources)/**"

CC-2018 (64 Bit)

- Adobe InDesign:
 - Install:
 - "censhare/censhare-XMLCommand-CC-2018-64Bit.pln"
 - "censhare/(censhare-XMLCommand-CC-2018-64Bit Resources)/*"
 - "censhare/censhare-XMLCommand-CC-2018-UI-64Bit.pln"
 - "censhare/(censhare-XMLCommand-CC-2018-UI-64Bit Resources)/*"
- Adobe InDesign Server:
 - Install:
 - "censhare/censhare-XMLCommand-CC-2018-64Bit.pln"
 - "censhare/(censhare-XMLCommand-CC-2018-64Bit Resources)/*"
- Adobe InCopy:
 - Disable only for censhare versions smaller 5.8.5, 5.7.6, 5.6.10, 5.5.11:
 - "ICWF/Assignment UI.apln" (which was "InCopyWorkflow/Assignment UI.apln" in earlier Adobe releases)
 - Install:
 - "censhare/censhare-XMLCommand-CC-2018-64Bit.pln"
 - "censhare/(censhare-XMLCommand-CC-2018-64Bit Resources)/*"
 - "censhare/censhare-XMLCommand-CC-2018-UI-64Bit.pln"
 - "censhare/(censhare-XMLCommand-CC-2018-UI-64Bit Resources)/*"

CC-2017 (32 Bit)

- Adobe InDesign:
 - Install:
 - "censhare/censhare-XMLCommand-CC-2017.pln"
 - "censhare/(censhare-XMLCommand-CC-2017 Resources)/*"
 - "censhare/censhare-XMLCommand-CC-2017-UI.pln"
 - "censhare/(censhare-XMLCommand-CC-2017-UI Resources)/*"
- Adobe InDesign Server:
 - Install:
 - "censhare/censhare-XMLCommand-CC-2017.pln"
 - "censhare/(censhare-XMLCommand-CC-2017 Resources)/*"
- Adobe InCopy:
 - Disable only for censhare versions smaller 5.8.5, 5.7.6, 5.6.10, 5.5.11, 5.4.9, 5.3.12, 5.2.12, 5.1.17:
 - "ICWF/Assignment UI.apln" (which was "InCopyWorkflow/Assignment UI.apln" in earlier Adobe releases)
 - Install:
 - "censhare/censhare-XMLCommand-CC-2017.pln"
 - "censhare/(censhare-XMLCommand-CC-2017 Resources)/*"
 - "censhare/censhare-XMLCommand-CC-2017-UI.pln"
 - "censhare/(censhare-XMLCommand-CC-2017-UI Resources)/*"

CC-2017 (64 Bit)

- Adobe InDesign:
 - Install:
 - "censhare/censhare-XMLCommand-CC-2017-64Bit.pln"
 - "censhare/(censhare-XMLCommand-CC-2017-64Bit Resources)/**"
 - "censhare/censhare-XMLCommand-CC-2017-UI-64Bit.pln"
 - "censhare/(censhare-XMLCommand-CC-2017-UI-64Bit Resources)/**"
- Adobe InDesign Server:
 - Install:
 - "censhare/censhare-XMLCommand-CC-2017-64Bit.pln"
 - "censhare/(censhare-XMLCommand-CC-2017-64Bit Resources)/**"
- Adobe InCopy:
 - Disable only for censhare versions smaller
5.8.5, 5.7.6, 5.6.10, 5.5.11, 5.4.9, 5.3.12, 5.2.12, 5.1.17:
 - "ICWF/Assignment UI.apln" (which was "InCopyWorkflow/Assignment UI.apln" in earlier Adobe releases)
 - Install:
 - "censhare/censhare-XMLCommand-CC-2017-64Bit.pln"
 - "censhare/(censhare-XMLCommand-CC-2017-64Bit Resources)/**"
 - "censhare/censhare-XMLCommand-CC-2017-UI-64Bit.pln"
 - "censhare/(censhare-XMLCommand-CC-2017-UI-64Bit Resources)/**"

CC-2015 (32 Bit)

- Adobe InDesign:
 - Install:
 - "censhare/censhare-XMLCommand-CC-2015.pln"
 - "censhare/(censhare-XMLCommand-CC-2015 Resources)/**"
 - "censhare/censhare-XMLCommand-CC-2015-UI.pln"
 - "censhare/(censhare-XMLCommand-CC-2015-UI Resources)/**"
- Adobe InDesign Server:
 - Install:
 - "censhare/censhare-XMLCommand-CC-2015.pln"
 - "censhare/(censhare-XMLCommand-CC-2015 Resources)/**"
- Adobe InCopy:
 - Disable only for censhare versions smaller
5.8.5, 5.7.6, 5.6.10, 5.5.11, 5.4.9, 5.3.12, 5.2.12, 5.1.17:
 - "ICWF/Assignment UI.apln" (which was "InCopyWorkflow/Assignment UI.apln" in earlier Adobe releases)
 - Install:
 - "censhare/censhare-XMLCommand-CC-2015.pln"
 - "censhare/(censhare-XMLCommand-CC-2015 Resources)/**"
 - "censhare/censhare-XMLCommand-CC-2015-UI.pln"
 - "censhare/(censhare-XMLCommand-CC-2015-UI Resources)/**"

CC-2015 (64 Bit)

- Adobe InDesign:
 - Install:
 - "censhare/censhare-XMLCommand-CC-2015-64Bit.pln"
 - "censhare/(censhare-XMLCommand-CC-2015-64Bit Resources)/*"
 - "censhare/censhare-XMLCommand-CC-2015-UI-64Bit.pln"
 - "censhare/(censhare-XMLCommand-CC-2015-UI-64Bit Resources)/*"
- Adobe InDesign Server:
 - Install:
 - "censhare/censhare-XMLCommand-CC-2015-64Bit.pln"
 - "censhare/(censhare-XMLCommand-CC-2015-64Bit Resources)/*"
- Adobe InCopy:
 - Disable only for censhare versions smaller
5.8.5, 5.7.6, 5.6.10, 5.5.11, 5.4.9, 5.3.12, 5.2.12, 5.1.17:
 - "ICWF/Assignment UI.apln" (which was "InCopyWorkflow/Assignment UI.apln" in earlier Adobe releases)
 - Install:
 - "censhare/censhare-XMLCommand-CC-2015-64Bit.pln"
 - "censhare/(censhare-XMLCommand-CC-2015-64Bit Resources)/*"
 - "censhare/censhare-XMLCommand-CC-2015-UI-64Bit.pln"
 - "censhare/(censhare-XMLCommand-CC-2015-UI-64Bit Resources)/*"

CC-2014 (32 Bit)

- Adobe InDesign:
 - Install:
 - "censhare/censhare-XMLCommand-CC-2014.pln"
 - "censhare/(censhare-XMLCommand-CC-2014 Resources)/*"
 - "censhare/censhare-XMLCommand-CC-2014-UI.pln"
 - "censhare/(censhare-XMLCommand-CC-2014-UI Resources)/*"
- Adobe InDesign Server:
 - Install:
 - "censhare/censhare-XMLCommand-CC-2014.pln"
 - "censhare/(censhare-XMLCommand-CC-2014 Resources)/*"
- Adobe InCopy:
 - Disable only for censhare versions smaller
5.8.5, 5.7.6, 5.6.10, 5.5.11, 5.4.9, 5.3.12, 5.2.12, 5.1.17, 4.10.24, 4.9.20, 4.8.27:
 - "InCopyWorkflow/Assignment UI.apln"
 - Install:
 - "censhare/censhare-XMLCommand-CC-2014.pln"
 - "censhare/(censhare-XMLCommand-CC-2014 Resources)/*"
 - "censhare/censhare-XMLCommand-CC-2014-UI.pln"
 - "censhare/(censhare-XMLCommand-CC-2014-UI Resources)/*"

CC-2014 (64 Bit)

- Adobe InDesign:
 - Install:
 - "censhare/censhare-XMLCommand-CC-2014-64Bit.pln"
 - "censhare/(censhare-XMLCommand-CC-2014-64Bit Resources)/**"
 - "censhare/censhare-XMLCommand-CC-2014-UI-64Bit.pln"
 - "censhare/(censhare-XMLCommand-CC-2014-UI-64Bit Resources)/**"
- Adobe InDesign Server:
 - Install:
 - "censhare/censhare-XMLCommand-CC-2014-64Bit.pln"
 - "censhare/(censhare-XMLCommand-CC-2014-64Bit Resources)/**"
- Adobe InCopy:
 - Disable only for censhare versions smaller 5.8.5, 5.7.6, 5.6.10, 5.5.11, 5.4.9, 5.3.12, 5.2.12, 5.1.17, 4.10.24, 4.9.20, 4.8.27:
 - "InCopyWorkflow/Assignment UI.apln"
 - Install:
 - "censhare/censhare-XMLCommand-CC-2014-64Bit.pln"
 - "censhare/(censhare-XMLCommand-CC-2014-64Bit Resources)/**"
 - "censhare/censhare-XMLCommand-CC-2014-UI-64Bit.pln"
 - "censhare/(censhare-XMLCommand-CC-2014-UI-64Bit Resources)/**"

CC (32 Bit)

- Adobe InDesign:
 - Install:
 - "censhare/censhare-XMLCommand-CC.pln"
 - "censhare/(censhare-XMLCommand-CC Resources)/**"
 - "censhare/censhare-XMLCommand-CC-UI.pln"
 - "censhare/(censhare-XMLCommand-CC-UI Resources)/**"
- Adobe InDesign Server:
 - Install:
 - "censhare/censhare-XMLCommand-CC.pln"
 - "censhare/(censhare-XMLCommand-CC Resources)/**"
- Adobe InCopy:
 - Disable only for censhare versions smaller 5.8.5, 5.7.6, 5.6.10, 5.5.11, 5.4.9, 5.3.12, 5.2.12, 5.1.17, 4.10.24, 4.9.20, 4.8.27 and lower:
 - "InCopyWorkflow/Assignment UI.apln"
 - Install:
 - "censhare/censhare-XMLCommand-CC.pln"
 - "censhare/(censhare-XMLCommand-CC Resources)/**"
 - "censhare/censhare-XMLCommand-CC-UI.pln"
 - "censhare/(censhare-XMLCommand-CC-UI Resources)/**"

CC (64 Bit)

- Adobe InDesign:
 - Install:
 - "censhare/censhare-XMLCommand-CC-64Bit.pln"
 - "censhare/(censhare-XMLCommand-CC-64Bit Resources)/*"
 - "censhare/censhare-XMLCommand-CC-UI-64Bit.pln"
 - "censhare/(censhare-XMLCommand-CC-UI-64Bit Resources)/*"
- Adobe InDesign Server:
 - Install:
 - "censhare/censhare-XMLCommand-CC-64Bit.pln"
 - "censhare/(censhare-XMLCommand-CC-64Bit Resources)/*"
- Adobe InCopy:
 - Disable only for censhare versions smaller
5.8.5, 5.7.6, 5.6.10, 5.5.11, 5.4.9, 5.3.12, 5.2.12, 5.1.17, 4.10.24, 4.9.20, 4.8.27 and lower:
 - "InCopyWorkflow/Assignment UI.apln"
 - Install:
 - "censhare/censhare-XMLCommand-CC-64Bit.pln"
 - "censhare/(censhare-XMLCommand-CC-64Bit Resources)/*"
 - "censhare/censhare-XMLCommand-CC-UI-64Bit.pln"
 - "censhare/(censhare-XMLCommand-CC-UI-64Bit Resources)/*"

CS-6

- Adobe InDesign:
 - Install:
 - "censhare/censhare-XMLCommand-CS6.pln"
 - "censhare/(censhare-XMLCommand-CS6 Resources)/*"
 - "censhare/censhare-XMLCommand-CS6-UI.pln"
 - "censhare/(censhare-XMLCommand-CS6-UI Resources)/*"
- Adobe InDesign Server:
 - Install:
 - "censhare/censhare-XMLCommand-CS6.pln"
 - "censhare/(censhare-XMLCommand-CS6 Resources)/*"
- Adobe InCopy:
 - Disable only for censhare versions smaller
5.8.5, 5.7.6, 5.6.10, 5.5.11, 5.4.9, 5.3.12, 5.2.12, 5.1.17, 4.10.24, 4.9.20, 4.8.27 and lower:
 - "InCopyWorkflow/Assignment UI.apln"
 - Install:
 - "censhare/censhare-XMLCommand-CS6.pln"
 - "censhare/(censhare-XMLCommand-CS6 Resources)/*"
 - "censhare/censhare-XMLCommand-CS6-UI.pln"
 - "censhare/(censhare-XMLCommand-CS6-UI Resources)/*"

CS-5.5 (Additionally a registry patch is needed, see <https://ecosphere.censhare.com/en/article/2377675>)

- Adobe InDesign:
 - Install:
 - "censhare/censhare-XMLCommand-CS5.5.pln"
 - "censhare/(censhare-XMLCommand-CS5.5 Resources)/*"
 - "censhare/censhare-XMLCommand-CS5.5-UI.pln"
 - "censhare/(censhare-XMLCommand-CS5.5-UI Resources)/*"

- Adobe InDesign Server:
 - Install:
 - "censhare/censhare-XMLCommand-CS5.5.pln"
 - "censhare/(censhare-XMLCommand-CS5.5 Resources)/*"

- Adobe InCopy:
 - Disable only for censhare versions smaller
5.8.5, 5.7.6, 5.6.10, 5.5.11, 5.4.9, 5.3.12, 5.2.12, 5.1.17, 4.10.24, 4.9.20, 4.8.27 and lower:
 - "InCopyWorkflow/Assignment UI.apln"
 - Install:
 - "censhare/censhare-XMLCommand-CS5.5.pln"
 - "censhare/(censhare-XMLCommand-CS5.5 Resources)/*"
 - "censhare/censhare-XMLCommand-CS5.5-UI.pln"
 - "censhare/(censhare-XMLCommand-CS5.5-UI Resources)/*"

CS-5

- Adobe InDesign:
 - Install:
 - "censhare/censhare-XMLCommand-CS5.pln"
 - "censhare/(censhare-XMLCommand-CS5 Resources)/*"
 - "censhare/censhare-XMLCommand-CS5-UI.pln"
 - "censhare/(censhare-XMLCommand-CS5-UI Resources)/*"

- Adobe InDesign Server:
 - Install:
 - "censhare/censhare-XMLCommand-CS5.pln"
 - "censhare/(censhare-XMLCommand-CS5 Resources)/*"

- Adobe InCopy:
 - Disable only for censhare versions smaller
5.8.5, 5.7.6, 5.6.10, 5.5.11, 5.4.9, 5.3.12, 5.2.12, 5.1.17, 4.10.24, 4.9.20, 4.8.27 and lower:
 - "InCopyWorkflow/Assignment UI.apln"
 - Install:
 - "censhare/censhare-XMLCommand-CS5.pln"
 - "censhare/(censhare-XMLCommand-CS5 Resources)/*"
 - "censhare/censhare-XMLCommand-CS5-UI.pln"
 - "censhare/(censhare-XMLCommand-CS5-UI Resources)/*"

CS-4

- Adobe InDesign:
 - Install:
 - "censhare/censhare-XMLCommand-CS4.pln"

- Adobe InDesign Server:
 - Install:
 - "censhare/censhare-XMLCommand-Server-CS4.pln"

- Adobe InCopy:
 - Disable:
 - "InCopyWorkflow/Assignment UI.apln"
 - Install:
 - "censhare/censhare-XMLCommand-CS4.pln"

CS-3

- Adobe InDesign:
 - Install:
 - "censhare/censhare-XMLCommand-CS3.pln"

- Adobe InDesign Server:
 - Install:
 - "censhare/censhare-XMLCommand-Server-CS3.pln"

- Adobe InCopy:
 - Disable:
 - "InCopyWorkflow/InCopy Bridge.apln"
 - "InCopyWorkflow/InCopy Bridge UI.apln"
 - "InCopyWorkflow/Assignment UI.apln"
 - Install:
 - "censhare/censhare-XMLCommand-CS3.pln"

CS-2

- Adobe InDesign:
 - Install:
 - "censhare/censhare-XMLCommand-CS2.pln"

- Adobe InDesign Server:
 - Install:
 - "censhare/censhare-XMLCommand-Server-CS2.pln"

- Adobe InCopy:
 - Disable:
 - "InCopyWorkflow/InCopy Bridge.framework"
 - "InCopyWorkflow/InCopy Bridge UI.framework"
 - "InCopyWorkflow/Assignment UI.framework"
 - Install:
 - "censhare/censhare-XMLCommand-CS2.pln"

CS

- Adobe InDesign:
 - Disable:
 - "InCopyWorkflow/InCopy Bridge.pln"
 - "InCopyWorkflow/InCopy Bridge UI.pln"
 - "InCopyWorkflow/InCopyExport.pln"
 - Install:
 - "censhare/XMLCommand-CenShare.pln"
 - "censhare/InCopyExport-CenShare.pln"

- Adobe InCopy:
 - Disable:
 - "InCopyWorkflow/InCopy Bridge.pln"
 - "InCopyWorkflow/InCopy Bridge UI.pln"
 - "Text/Story List Panel.pln"
 - "UI/InCopyFileActions.pln"
 - Install:
 - "censhare/XMLCommand-CenShare.pln"
 - "censhare/InCopyFileActions-CenShare.pln"